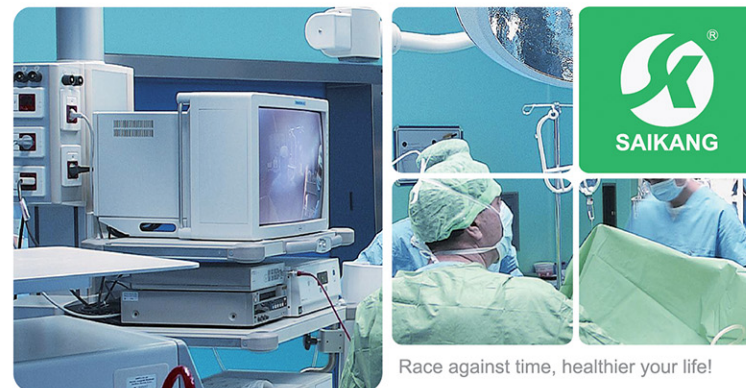


2015 EDITION III

## JIANGSU SAIKANG MEDICAL EQUIPMENT CO.,LTD. JIANGSU SAIKANG MEDICAL CO.,LTD.

Addr.: No.35 Lehong Road, Modern Agriculture Demonstration Park,  
Zhangjiagang City, Jiangsu Province, China.  
Tel.: +86 512 58525850  
Fax: +86 512 58520713  
Mob.: 0086-13962479538  
P.C.: 215600  
Web: [www.chinasaikang.com](http://www.chinasaikang.com) [www.jssaikang.com](http://www.jssaikang.com)  
E-mail: [inquiry@jssaikang.com](mailto:inquiry@jssaikang.com)



Race against time, healthier your life!

# SAIKANG MEDICAL

**SURGICAL**



## Company profile

Saikang Medical started the factory since 2002, with the area of 30,000 square meters, 400 employees. Located in Zhangjiagang City, we enjoy the highly developed economic expansion and convenient transportation access.

We are combined with manufacture, service, and supply of Hospital Furniture, important care on our customer's satisfaction. So far, over 80 countries and philosophy of being firmly committed to "Integrity is the base, Customer is the first".

Managed by a professional team who has a wide range of managerial experience, great enthusiasm and efficacy. Our vision we provide the world-class products in the near future.

Emergency, Surgical products. We are devoted to providing a one-stop sales model to customer; We give more regions have enjoyed our products and service. Our success has been mainly achieved by following the corporate

our Sales-team, Research and Development department, Production department, QC department are working with and service to improve health-care system worldwide to the top level. Wish you can enjoy our products and service

and service to improve health-care system worldwide to the top level. Wish you can enjoy our products and service

## Certificate







## CONTENTS

Operating Table	01
Accessories	13
Electric Parturition Bed	14
Electric Delivery Table	16
Electric Gynecological Table	17
Ordinary Parturition Bed	18
Orthopedic Frame	19
Medical Lamp	21
Pendant	32
Monitor	37
ECG	38
Syringe Pump	39
Suction Apparatus	41
Stomach Irrigator	44
Ventilator	45
Infant Incubator	46
Infant Radiant Warmer	47
Oxygen Concentrator	48
Surgical Instrument	49

Jiangsu Saikang Medical Equipment Co.,Ltd. has been established since 2002. It is located in Zhangjiagang City, along the Economic circle of Yangtse River Delta, enjoying the highly developed economic expansion and convenient transportation access.

Our success has been mainly achieved by following the corporate philosophy of being firmly committed to "Integrity is the base, Customer is the first". Our vision is "Race against time, healthier your life.", to provide the world-class products and services to improve health-care system worldwide to the top level. Our mission is to achieve 60 percent of the market share in our products range.



# Operating Table



## A2000

### SKL-A General Electric Operating Table

#### General

- Designed for surgical procedures of head, neck, thorax and abdomen.

#### Features

- The back section and the leg section are equipped with the barometric pressure spring.
- Leg section can be rotated, opened, disassembled and adjusted easily. It is mostly adapt to the urological operation.
- The table top is made of high-strength synthetic boards. X-ray examination can be carried out on it.
- With 24V direct supply. The table is safe and reliable. The table's elevation, lowering, reversed trendelenburg, trendelenburg, lateral tilt are all automatically controlled by the button.
- With different kinds of table tops for different use.
- The ascending and descending movements, lateral tilt movements, reversed trendelenburg and trendelenburg movements, backward and forward movements of the table top are all electrically operated.

#### Accessories

- Anesthesia screen, shoulder support, armrest support, knee crutch, body support.

Length	Width	Max. Height	Min. Height
2100mm	480mm	1000mm	750mm



## A3008

### SKT-B General Manual Operating Table (Head Control)

#### General

- This table is suitable for surgical procedures of the head, neck, thorax, abdomen and extremities, as well as for gynaecological, oto-rhino-laryngological and orthopedics operation. It is characterized by versatility.

#### Features

- Material: Stainless Steel
- Functions:
  - Head section raised from the horizontal: 0-30°
  - Head section lowered from the horizontal: 0-90°
  - Back section raised from the horizontal: 0-75°
  - Back section lowered from the horizontal: 0-8°
  - Leg section lowered from the horizontal: 0-90°
  - Kidney bridge elevation: 0-120mm
  - Lateral Tilt: 0-20°
  - Trendelenburg: 0-30°
  - Reversed Trendelenburg: 0-50°

#### Accessories

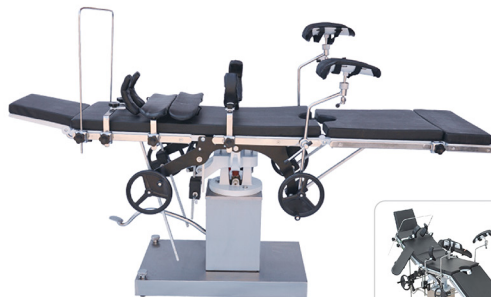
- Anesthesia screen, shoulder support, armrest support, knee crutch, body support.

Length	Width	Max. Height	Min. Height
1900mm	480mm	940mm	700mm

A3008	Undetachable Leg Board with Foot Plate.
A3008A	Detachable and Outreached Leg Board with Foot Plate. Double Mesa for X-ray Photography.
A3008B	Detachable and Outreached Leg Board with Foot Plate.
A3008D	All Movements Controlled by Air Spring.



# Operating Table



## A3001 SKT-C Ordinary Manual Operating Table (Head Control)

### General

- This table is suitable for surgical procedures of the head, neck, thorax, abdomen and extremities, as well as for gynaecological, oto-rhino-laryngological and orthopedics operation. It is characterized by versatility.

### Features

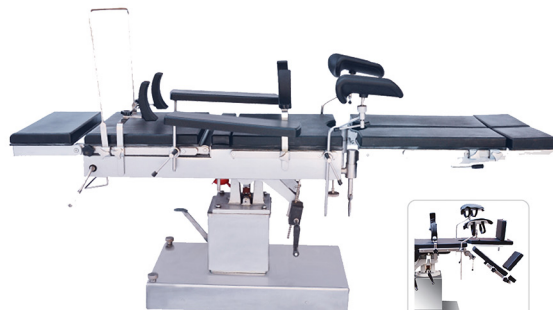
- Material: Stainless Steel
- Functions:
  - Head section raised from the horizontal: 0-45°
  - Head section lowered from the horizontal: 0-90°
  - Back section raised from the horizontal: 0-75°
  - Back section lowered from the horizontal: 0-18°
  - Leg section lowered from the horizontal: 0-90°
  - Kidney bridge elevation: 0-120mm
  - Lateral Tilt: 0-18°
  - Trendelenburg: 0-20°
  - Reversed Trendelenburg: 0-30°

### Accessories

- Anesthesia screen, shoulder support, armrest support, knee crutch, body support.

<b>A3001</b>	Undetachable Leg Board with Foot Plate.
<b>A3001A</b>	Detachable and Outreached Leg Board with Foot Plate.
<b>A3001B</b>	Detachable and Outreached Leg Board with Foot Plate. Double Mesa for X-ray Photography.
<b>A3001C</b>	Detachable and Outreached Leg Board with Foot Plate. Double Mesa Design. Longitudinal Movements, compatible with C-arm.

Length	Width	Height	Height (3001D)
2100mm	480mm	800-1040mm	710-910mm



## A3002 SKT-C Ordinary Manual Operating Table (Side Control)

### General

- This table is suitable for surgical procedures of the head, neck, thorax, abdomen, perineum and extremities, as well as for gynaecological, oto-rhino-laryngological and orthopedics operation.

### Features

- The table's elevation, lowering, reversed trendelenburg, trendelenburg, lateral tilt can be manual controlled. Leg section can be rotated, opened, disassembled and adjusted easily. It is most suitable for the urological operation. The table top made of high strength glass, can move backwards and forwards. X-ray examination can be carried out on it. It can be raised or lowered hydraulically by means of an oil pump. Various positions can be controlled from both sides. Chassis inside and outside covers are stainless steel.

### Accessories

- Anesthesia screen, shoulder support, armrest support, knee crutch, body support.

Length	Width	Max. Height	Min. Height	Height Adjustment
2000mm	550mm	950mm	750mm	≥200mm

# Operating Table



## A100

### SKL-B Electric Operating Table

#### General

◆ Electric operating table featured with integrated multi-function can fulfill the needs of various operation.

#### Features

- ◆ The bed surface adopts imported carbon plastic platette, the table can be slid which can fulfill the needs of C type arm for whole body examination.
- ◆ Panel control and remote control with battery can fit for 50 sets operation.
- ◆ The mattress is wrapped with imported artificial leather. High-density memory sponge is formed in one piece, with no seam.
- ◆ Imported LINA motor without noise and with long life-span.
- ◆ The base seat and upright column covering are made of high quality 304 stainless steel, which can be easily cleaned and sterilized.
- ◆ Foot treadle brake device which is easy for moving operating table.
- ◆ The leg part uses spring gas control, leg part can be separated.

#### Accessories

- ◆ A pair of shoulder support frame, a pair of arm resting frame, a pair of leg support frame, a screen frame, a pair of pedal foot board, a waistband.



## A100-4

### SKT-A Electric Operating Table

#### General

- ◆ Electric operating table is made specially to meet demand of general surgical operations. It adopts full 304 stainless steel, excellent properties on anti-rust.

#### Features

- ◆ Tabletop is X-raying available, can be sliding for over 300mm, that meet C-arm need.
- ◆ Length/Width: 2070mm/550mm
- ◆ Elevation(up/down): 700mm/1000mm
- ◆ Trendelenburg:  $\pm 25^\circ$
- ◆ Reverse Trendelenburg:  $\pm 25^\circ$
- ◆ Lateral Tilt(left/right):  $15^\circ/15^\circ$
- ◆ Head Rest(up/down):  $45^\circ/90^\circ$
- ◆ Footplate(up/down&horizontal positioning):  $90^\circ$
- ◆ Back plate(up/down):  $75^\circ/20^\circ$
- ◆ Kidney bridge: 120mm
- ◆ Sliding: 300mm
- ◆ Power: 220v, 50Hz, 1.0kW

#### Accessories

- ◆ 1 Anaesthetic Screen
- ◆ 2 Shoulder Rest
- ◆ 2 Arm Support
- ◆ 2 Body Support
- ◆ 2 Knee Crutch
- ◆ 1 Mattress



# Operating Table



## A101 SKT-A Manual Operating Table

### General

- ◆ The operation table is suitable for various operation.

### Features

- ◆ Various actions are controlled by hydraulic pneumatic system and mechanical drive system.
- ◆ The table can be rotated 360° on condition that the base is fixed.
- ◆ Imported Y type sealing ring is durable.
- ◆ The table surface adopts imported carbon plastic plate which is easily for conducting X-ray examination, photography.
- ◆ Both sides of the bed rail are high quality 304 stainless steel.
- ◆ The table support is formed with aluminum alloy by forging process and will never get rusty.
- ◆ The mattress is wrapped with imported artificial leather. High-density memory sponge is foamed in one piece with no seam.
- ◆ The base seal and upright column covering are made of high quality 304 stainless steel which can be easily cleaned and sterilized.
- ◆ Foot treadle brake device which is easily for moving operating table.

### Accessories

- ◆ A pair of shoulder support frame, a pair of waist support frame, a pair of arm resting frame, a pair of leg support frame, a screen frame, a pair of pedal foot board, a waistband.



## A102 SKL-C Electric Operating Table

### General

- ◆ It is a cost-effective, multi-performance mobile operating table that meets the requirements of different surgeons. The clinical staff can easily operate the table quickly and effectively, even in a dark operating theater.
- ◆ The large loading capacity accommodates patients of different sizes.

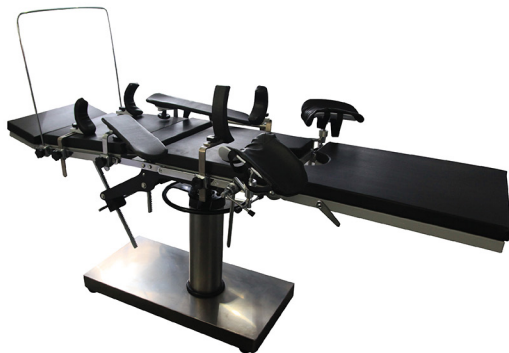
### Features

- ◆ Imported hydraulic motor and solenoid valve from HOERBIGER.
- ◆ It has the function of auto-restoration.
- ◆ Electro-hydraulic mode of operation is adopted. Two control modes (hand-held remote controller and panel) are available to control various movements, MCU processing is used. Self-locking function is provided to avoid false triggering.
- ◆ Quality stainless steel 304 is used for table support, bed plate, column shield and rails on both sides of the table. Easy for cleaning and sterilization. Console supports the use of cast aluminium parts, which will never rust.
- ◆ The mattress is wrapped with imported artificial leather. High-density memory sponge is formed in one piece with no seam.
- ◆ Imported carbon steel plate is used for the table top, which is convenient for X-ray photography.
- ◆ AC and DC can use at the same time.
- ◆ The table top can slide.
- ◆ Electric braking device is convenient for shifting the operating table.

### Accessories

- ◆ A pair of shoulder support frame, a pair of waist support frame, a pair of arm resting frame, a pair of leg support frame, a screen frame, a pair of pedal foot board, a waistband.

# Operating Table



**A088**  
**SKT-A Ordinary Operating Table**

## General

- ◆ This table is suitable for surgical procedures of the head, neck, thorax and abdomen, and extremities, as well as for gynaecological, oto-rhino-laryngological and orthopedics operation.
- ◆ It is characterized by versatility.

## Features

- ◆ Head section raised from the horizontal: 0-45°
- ◆ Head section lowered from the horizontal: 0-90°
- ◆ Back section raised from the horizontal: 0-45°
- ◆ Leg section lowered from the horizontal: 0-20°
- ◆ Leg section lowered from the horizontal: 0-90°

## Accessories

- ◆ Anesthesia screen, shoulder support, armrest support, knee crutch, body support.



**A109**  
**SKT-A Electric eye operation table**

## General

- ◆ The electric operating table for eye surgery is one of the eye operating table designed and developed according to the special requirements of operation, can fulfill the needs of eye surgery

## Features

- ◆ The super low level design can enable doctor to conduct operation sitting by operating table
- ◆ Adopt electric hydraulic double cylinder elevating with stable performance
- ◆ Imported motor and solenoid valve
- ◆ The base seat and upright column covering are made of high quality 304 stainless steel which is anti-corrosive and can be easily cleaned
- ◆ Electrical braking device which is easily for moving operating table
- ◆ Length: 1970 ±50mm
- ◆ Width: 600 ±20mm
- ◆ Height: (550-900)±50mm
- ◆ Trendelenburg/Rev-Trend: 15°
- ◆ Head board fold upward: ≥20° fold downward: ≥90°
- ◆ Mains voltage: AC 220V 50Hz
- ◆ Input power: 500VA

## Accessories

- ◆ A pair of arm resting frame, a pair of Head support



# Electric Gynecological Table



**A104**  
**SKL-C Electric Super-Low Operating Table**

- ◆ The super low level design can enable doctor to conduct operation sitting by operating table.
- ◆ The base seat and upright column covering are made of high quality 304 stainless steel, which can be easily cleaned and sterilized.
- ◆ The bed surface adopts imported carbon plastic plate, which can fulfill the needs of X-ray examination, photography.
- ◆ The mattress is wrapped with imported artificial leather. High-density memory sponge is formed in one piece with no seam.
- ◆ Various actions are controlled according to electric hydraulic working principle and by remote controller.
- ◆ Imported motor and solenoid valve.
- ◆ Imported sealing ring is durable.
- ◆ Electrical braking device which is easily for moving operating table.
- ◆ The leg board is separated and dischargeable.

Length	2000±50mm	Width	480 ±20mm
Min.-Max. Height	(550-850)±50mm	Waist Board Lifting	120mm
Mains Voltage	AC 220V±10% 50Hz	Input Power	500VA
Forward	≥25°	Backward	≥15°
Leftward	≥15°	Rightward	≥15°
Leg Board Fold Downward	≥90°	Leg Board Fold Outward	≥90°
Back Board Fold Upward	≥75°	Back Board Fold Downward	≥20°
Head Board Fold Upward	≥30°	Head Board Fold Downward	≥90°



**A103**  
**SKL-B Electric Gynecological Table**

## General

- ◆ This series of gynecological table is suitable for conducting gynecological surgery, operative abortion and gynecological examination.

## Features

- ◆ Various actions are controlled by imported brand motor.
- ◆ Hand-held controller and foot controller are mutually independent and easily for operation.
- ◆ Leg support frame can be folded up and down electrically.
- ◆ Unique profile design which is beautiful and elegant.
- ◆ Whole stainless steel hidden auxiliary table with flexible extension and retraction.
- ◆ Equipped with hidden sewage basin.
- ◆ The table adopts high density memory sponge and is formed in one piece with no seam.
- ◆ It is featured with one-key reset function.
- ◆ Super mute foot wheel is equipped with brake device.

Table Length	1300±50mm	Trendelenburg/Rev.-Trend.	10°/12°
Table Width	550±20mm	Leg Support Reflex	30°
Height Adjustment	(700-1000)±50mm	Working Area	(350*450)±20mm
Backboard Upwards	50°	Mains Voltage AC	220V±10% 50Hz

## ACCESSORIES Electric Parturition Bed



**2000-A**  
Shoulder Support



**2000-B**  
Arm Rest



**2000-C**  
Lateral Arm-rest



**2000-D**  
Waist Support



**2000-E**  
Leg Support



**2000-F**  
Foot Panel



**2000-G**  
Anesthesia Screen



**2000-H**  
Waist Straps



**2000-I**  
Arm Straps



**2000-J**  
Clamp



**2000-K**  
Locking Device



**2000-M**  
External kidney bridge



**A98**  
**SKL-E Electric Parturition Bed**

### General

- Designed for various stages of care for patients. They can be used in labor, delivery and postpartum recovery period. The chair posture can be easily converted to provide adequate comfort for the lying-in women. The lying-in women don't need to be moved from one bed to another thanks to the bed's perfect structure.

### Features

- Linak Motor, various positions are controlled by remote controller.
- Foot pedal controller, built-in railing controller are optional.
- Positions: backrest, trendelenburg, reversed trendelenburg, height adjustment.
- Full Stainless Steel Material.
- PU cushion cover high density foam inside, 100mm in thickness, easy for cleaning and sterilization.
- Mounted on Sinch strong castors with central locking system.
- Ergonomic ABS guardrail, easy for cleaning and safety.
- Soft pillow makes the patient comfortable.
- With manual CPR function.
- With stainless steel sewage basin.



Overall Size (L*W*H)	2150*1000*550-800mm
Bed Surface Size	2100*950mm
Ranged Of Angle Of The Backrest	0°-70° (±5°)
Trendelenburg Range	5°
Reversed Trendelenburg Range	12°
Range Of Angle Of The Kidney Part	0°-17°
Leg Board Can Be Outreached	0°-90°
Loading Bearing	250kg
Mattress Thickness	100mm



# Electric Parturition Bed Electric Delivery Table



**A98-2**  
**SKL-E Electric Parturition Bed**

## General

- The obstetric beds are designed for various stages of care for patients. They can be used in labor, delivery and postpartum recovery period. The chair posture can be easily converted to provide adequate comfort for the lying-in women. The lying-in women don't need to be moved from one bed to another thanks to the bed's perfect structure

## Features

- Imported LINAK motor Various actions are controlled by remote controller
- Super mute big foot wheel which is easily moved and equipped with brake device
- Equipped with stainless steel sewage basin
- The mattress adopts high density memory sponge and is once formed, with no seam

## Accessories

- A pair of leg support frame, a stainless steel sewage basin, a stand for transfusion, a remote control, a power wire

Length	1900±50mm
Width	780±20mm
Height Adjustment	(550-800)±50mm
Backboard upwards	60°
Trendelenburg/Rev-Trend	5°/12°
Foot board upwards	40°
Foot board outwards	90°
Foot board height adjustment	100mm
Mains voltage	AC220±10% 50HZ
Input power	150VA



**A99**  
**SKL-D Electric Delivery Table**

## General

- Designed for conducting parturient delivery, gynecological surgery, operative abortion, diagnosis and examinations.

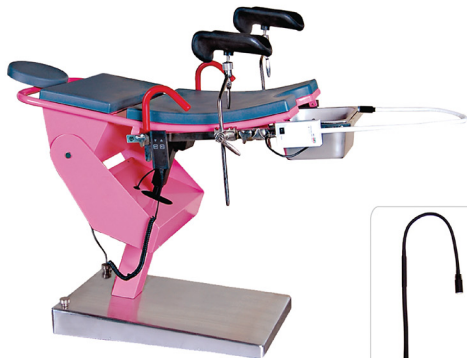
## Features

- Imported LINAK motor, various positions are controlled by remote controller. Foot pedal controller is optional.
- Position: back-rest, trendelenburg and reversed trendelenburg, height adjustment.
- Full stainless steel material.
- PU cushion cover with high density foam inside, 50mm in thickness, easy for cleaning and sterilization.
- Hidden auxiliary table with flexible extension and retraction.
- With stainless steel sewage basin and other accessories.
- Foot pedal brake device enables the easy moving of the table.

Overall Size (L*W*H)	1890*600*800-1000mm
Range Of Angle Of The Backrest	0°-70°(±5°)
Trendelenburg Range	12°
Reversed Trendelenburg Range	5°
Substructure Height	150mm
Loading Bearing	250kg
Mattress Thickness	60mm
Volume Of Basin	400*280*160mm
Size Of Armrest	500*165mm
Length Of Feet	500mm



# Electric Gynecological Table Manual Obstetric Table



## A99F

### SKL-B Electric Gynecological Examination Table

#### General

- ◆ Newly designed for clinical examination and treatment of obstetrics and gynecology, urology and lens detection.

#### Features

- ◆ Bed design is streamlined, adaptable to various positions.
- ◆ Electrical adjustment to meet the overall tilt and height adjustment by controlling the trendelenburg and reversed trendelenburg.
- ◆ Mattress is made of polyurethane foam, detachable and washable.
- ◆ Can install colonoscopy onto both sides of beds according to customer's request.
- ◆ Hidden built-in dirt pots under the bed, easy to deal with sewage and debris.
- ◆ Bed can be moved or locked.
- ◆ Low position to facilitate patient.

Length	Width	Height Adjustment	Trendelenburg/Rev.-Trend.
1250mm	520mm	480-1200mm	10°/12°



## A502

### SKF-C Manual Obstetric Table

#### General

- ◆ Designed for conducting parturient delivery, gynecological surgery, operative abortion, diagnosis and examinations.

#### Features

- ◆ The main bed and auxiliary bed are connected with each other auxiliary table is easy for dismantling.
- ◆ Foot step hydraulic elevating.
- ◆ Manual adjust back-rest, and trendelenburg position.
- ◆ Full stainless steel seat base and upright column.
- ◆ With stainless steel sewage basin and various accessories.
- ◆ High density memory sponge mattress.
- ◆ Rotary brake device enables the easy moving of the table.

Length	Width	Max. Height	Min. Height
1900mm	600mm	930mm	680mm

# Ordinary Parturition Bed Orthopedic Frame



Length	1900±50mm
Width	600±20mm
Height	750±20mm
Back Board Upwards/Downwards	50°/15°
Seat Board Upwards/Downwards	30°/8°
Leg Board Upwards/Downwards	30°/30°



## A046 SKF-B Manual Gynecological Bed

### General

- Designed for conducting parturient delivery, prenatal examination, diagnosis and examinations.

### Features

- The main and auxiliary tables can be separated and also joined up.
- The auxiliary table is provided with truckles and braking device.
- Various actions of main bed are adjusted by gear and auxiliary bed are adjusted by ratchet.
- With various complete accessories.

## A045 SKF-A Gynecological Examination Bed

- Powder coated steel frame.
- Leather table surface, inner is high density sponge.
- This bed is designed for gynecological diagnosis, operation and parturition.
- It can be folded and easily dismantled.
- Dimension: 1800\*520\*740mm
- Back-rest adjusted by ratchets, foot section adjusted by ratchets.
- Main technical parameters:  
Back section raised from the horizontal: 0-55°  
Back section lowered from the horizontal: 0-20°  
Leg section lowered from the horizontal: 0-85°



## A01 Multi-functional Orthopedic Frame

- This traction frame can be used with any other operating table.
- It is mainly used for surgical operation of lower limbs.
- Lower limbs traction is available to adjust to different positions.
- Stainless steel material
- Size: 1200\*480\*800-1030mm(L\*W\*H)

## A02 Multi-purpose Orthopedic Frame

- This table is used for surgical procedure of waist, ilium, knee, femur, tibia and low limbs.
- Multi-angle, multi-position traction.
- Easy adjusting, wide range, safety and durable.
- With the help of Model C X-ray, it can offer you with facility during any operation.



AC01  
Multi-purpose Head Rack



AC02  
Multi-purpose Head Rack



AC03  
Multi-purpose Head Rack



AC04  
Multi-purpose Head Rack



## A95 Spine Operating Supporter

- Overall length: ≥700mm
- Width of table top: ≥400mm
- Minimum height above floor: ≥160mm
- The adjustable brace buckling angle: -15° ~ 75°
- Head before and after the adjustment distance: ≥150mm
- Head height adjustment displacement: ≥50mm



# Medical Lamp

**SK-L277**  
12/5 Reflector Shadowless Lamp



Major Bulb Illumination	≥120,000LX	Bulb Voltage	AC 24V
Standby Bulb	≥50,000LX (at 1m distance)	Bulb Power	425W
Color Temperature	4000K±500K	Input Power	500VA
Mains Voltage	AC 220V±10% 50Hz	Installation Height	280-320cm

**SK-L215**  
9 Reflector Shadowless Lamp



Major Bulb Illumination	≥90,000LX (at 1m distance)	Bulb Voltage	AC 24V
Standby Bulb	/	Bulb Power	225W
Color Temperature	4000K±500K	Input Power	280VA
Mains Voltage	AC 220V±10% 50Hz	Installation Height	280-320cm

# Medical Lamp

**SK-L217**

**5 Reflector Shadowless Lamp**



**SK-L216**



**SK-L218**

<b>Illumination</b>	≥50,000LX (at 1m distance)	<b>Color Temperature</b>	4000K±500K
<b>Mains Voltage</b>	AC 220V±10% 50Hz	<b>Bulb Voltage</b>	AC 24V
<b>Bulb Power</b>	125W	<b>Input Power</b>	150VA

**SK-L202**

**Whole Reflector Shadowless Lamp**



<b>Illumination</b>	50,000-100,000LX (at 1m distance)	<b>Spot Diameter</b>	φ100-φ280mm
<b>Depth Of Light Beam</b>	≥700mm	<b>Brightness Adjustment</b>	8-stage continuous
<b>Shift Of Major And Standby Lamps</b>	automatic	<b>Color Temperature</b>	4500K±500K
<b>Temperature Rise</b>	≤12℃	<b>Temperature At Surgeon's Head</b>	≤2℃
<b>Diameter Of Lamp Holder</b>	500mm	<b>Mains Voltage</b>	AC 220V±20% 50Hz
<b>Bulb Voltage</b>	AC 24V	<b>Bulb Power</b>	150W
<b>Input Power</b>	200VA	<b>Installation Height</b>	270-320cm

# Medical Lamp



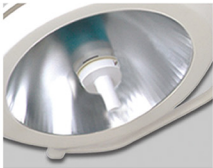
## SK-L204

Overall Reflection Type Shadowless Lamp



## SK-L262

Overall Reflection Type Shadowless Lamp



Illumination	50,000-100,000LX (at 1m distance)	Spot Diameter	φ100-φ280mm
Depth Of Light Beam	≥600mm	Brightness Adjustment	8-stage continuous
Shift Of Major And Standby Lamps	automatic	Color Temperature	4500K±500K
Temperature Rise	≤12℃	Temperature At Surgeon's Head	≤2℃
Diameter Of Lamp Holder	500mm	Mains Voltage	AC 220V±20% 50Hz
Bulb Voltage	AC 24V	Bulb Power	150W
Input Power	200VA	Installation Height	/

Illumination	50,000-120,000LX*2 (at 1m distance)	Spot Diameter	φ100-φ280mm
Depth Of Light Beam	≥600mm	Brightness Adjustment	8-stage continuous
Shift Of Major And Standby Lamps	automatic	Color Temperature	4500K±500K
Temperature Rise	≤12℃	Temperature At Surgeon's Head	≤2℃
Diameter Of Lamp Holder	600mm*2	Mains Voltage	AC 220V±20% 50Hz
Bulb Voltage	AC 24V	Bulb Power	150W*2
Input Power	220VA*2	Installation Height	280-320cm

# Medical Lamp



**SK-L329**  
Shadowless operation lamp

Diameter Of Lighththead(cm)	700	Color Temperature(K)	(3500-4500) ±500
Lilumination At 1m(lux)	40000-140000	Number Of LED Bulbs	72/72
Light Field Diameter At 1m (cm)	10-28	Averagebulblife(hours)	50000
D10(mm)	180±40/180±40	Heat-to-lighratio(mW/m²lx)	6
Diameter Of Spot D50(mm)	110±35/110±35	Working Distance(cm)	70-140
L1+L2 Depth Of Illumination(cm)	130	Power Supply	100-240V 50/60HZ
Color Rendering Index(Ra)	100±Ra≥85	Input Power(W)	180VA
Ceiling height for installation(cm)	270-320		



**SK-L331**  
Shadowless operation lamp

Diameter of lighththead(cm)	700
Lilumination at 1m(lux)	40000-140000
Light field diameter at 1m (cm)	10-28
D10(mm)	180±40
Diameter of spot D50(mm)	110±35
L1+L2 Depth of illumination(cm)	130
Color rendering index(Ra)	100±Ra≥85
Color temperature(K)	(3500-4500) ±500
Number of LED bulbs	72
Averagebulblife(hours)	50000
Heat-to-lighratio(mW/m²lx)	<6
Working distance(cm)	70-140
Power supply	100-240V 50/60HZ
Input power(W)	180VA



**SK-L332**  
Shadowless operation lamp

Diameter of lighththead(cm)	700
Lilumination at 1m(lux)	40000-140000
Light field diameter at 1m (cm)	10-28
D10(mm)	180±40
Diameter of spot D50(mm)	110±35
L1+L2 Depth of illumination(cm)	130
Color rendering index(Ra)	100±Ra≥85
Color temperature(K)	(3500-4500) ±500
Number of LED bulbs	72
Averagebulblife(hours)	50000
Heat-to-lighratio(mW/m²lx)	<6
Working distance(cm)	70-140
Power supply	100-240V 50/60HZ
Input power(W)	180VA
Battery	4 hours



# Medical Lamp

## SK-L325

### Shadowless Operation Lamp



Diameter Of Lamp Head	78/78cm	Number Of LED Bulbs	78/78
Illumination	80,000-160,000LX 80,000-160,000LX	Average Bulb Life	50,000h
Spot Diameter	4100-4280mm	Heat-to-light Ratio	3.3mW/m <sup>2</sup> LX
Diameter Of Spot D10	180±15mm	Working Distance	70-150cm
D50	100±15mm	Power Supply	100-240V, 50/60Hz
L1+L2 Depth Of Illumination	130cm	Max. Power Consumption (W)	300VA
Color Rendering Index	95Ra	Ceiling Height For Installation	270-320cm
Color Temperature	4500±500k	Installation Height	/



## SK-L326

### Shadowless Operation Lamp



Diameter Of Lamp Head	61cm	Number Of LED Bulbs	78/78
Illumination	60,000-120,000LX (at 1m distance)	Average Bulb Life	50,000h
Spot Diameter	4100-4280mm	Heat-to-light Ratio	3.3mW/m <sup>2</sup> LX
Diameter Of Spot D10	180±15mm	Working Distance	70-150cm
D50	100±15mm	Power Supply	100-240V, 50/60Hz
L1+L2 Depth Of Illumination	110cm/110cm	Max. Power Consumption (W)	300VA
Color Rendering Index	95Ra	Ceiling Height For Installation	270-320cm
Color Temperature	4500±500k	Installation Height	/

# Medical Lamp Pendant



**SK-L303**  
Shadowless Operation Lamp



**SK-L305**  
Shadowless Operation Lamp

## SK-P001 SK-P002 Pendant

- ◆ Ceiling, arm rotation 340 degree, no arm lifting length, horizontal rotation, high-strength aluminum alloy, damping brake system is available, no arm, shelf.
- ◆ Gas outlet: O<sub>2</sub>\*1, VAC\*1, AIR\*1 (German), Electrical socket\*6, Drawer\*1.



**SK-P001**



**SK-P002**



**SK-L315**  
Vertical shadowless Lamp



**SK-L002**  
Examination Lamp



**SK-L003**  
Examination Lamp



**SK-L019**  
Stand



# Pendant



SK-P004

## SK-P004

### Single Arm Pendant (Ceiling Column Type)

- ◆ Arm length: 1000mm, loading capacity: 180kg, shelf\*2, column length: 800mm (standard), drawer\*1.
- ◆ Ceiling, arm rotation 340 degree, no arm lift length, horizontal rotation, high-strength aluminum alloy, damping brake system is available, pneumatic brake system is optional.
- ◆ Gas-outlet:  
For surgical: O<sub>2</sub>\*1, AIR\*1, VAC\*1 (German).  
For endoscopy: O<sub>2</sub>\*1, AIR\*1, VAC\*1, CO<sub>2</sub>\*1 (German).  
For anesthesia: O<sub>2</sub>\*1, AIR\*1, VAC\*1, N<sub>2</sub>O\*1, AGSS\*1 (German).  
Electrical socket\*6 (universal, 220V) (Max.\*12).



SK-P005

## SK-P005

### Double Arm Pendant (Ceiling Box Type)

- ◆ Arm length: 800\*800mm, loading capacity: 150kg, shelf\*2, box length: 560mm (standard), drawer\*1.
- ◆ Ceiling, arm rotation 340 degree, no arm lift length, horizontal rotation, high-strength aluminum alloy, damping brake system is available, pneumatic brake system is optional.
- ◆ Gas-outlet:  
For surgical: O<sub>2</sub>\*1, AIR\*1, VAC\*1 (German).  
For endoscopy: O<sub>2</sub>\*1, AIR\*1, VAC\*1, CO<sub>2</sub>\*1 (German).  
For anesthesia: O<sub>2</sub>\*1, AIR\*1, VAC\*1, N<sub>2</sub>O\*1, AGSS\*1 (German).  
Electrical socket\*6 (universal, 220V) (Max.\*8).



## SK-P011

### ICU Combination Pendant (Separate W&D)

- ◆ Ceiling, arm rotation 340 degree, no arm lifting length, horizontal rotation, high-strength aluminum alloy, damping brake system is available, pneumatic brake system is optional, assembly pendant.
- ◆ Wet area: single arm\*1000mm (length can adjust), loading capacity: 180kg, shelf\*2.
- ◆ Gas-outlet: O<sub>2</sub>\*1, VAC\*1, AIR\*1 (German). Electrical socket\*6.
- ◆ Dry area: double arms: 800\*800mm, (length can adjust) loading capacity: 150kg, shelf\*2.
- ◆ Gas outlet: O<sub>2</sub>\*1, VAC\*1, AIR\*1 (German). Electrical socket\*6.

Pendant



#### SK-P012

##### Medical Bridge Ceiling Pendant (Separate Wet And Dry Areas)

- ◆ Ceiling horizontal movement by manual or electrical. With rotation high-strength aluminum alloy, damping brake system is available.
- ◆ Beam length: 2000-4000mm, ceiling part flexible diversity.
- ◆ Power socket\*12 (universal 220V), medical gas-outlet: O<sub>2</sub>\*2, VAC\*2, AIR\*2 (German), quantity is optional, wet area: ceiling box\*1, shelf\*2, drawer\*1, dry area: ceiling column\*1, shelf\*2, drawer\*1.



#### SK-P036

##### Electrical Anesthesia Ceiling Supply Unit

- ◆ Electrical Anesthetic Pendant is an anesthetic workstation designed for modern clean operation rooms and general operation rooms. All kinds of terminals such as for medical gas, electricity, network are all gathered on the control board. The function of moving freely makes the operation more convenient.
- ◆ The cross arm and control cabinet of the tower crane adopt the imported high-strength aluminum alloy of patent technology for the one-off extrusion molding, and the surface undergoes the primary oxidation treatment.
- ◆ Aluminum molding tray with non-slip texture.
- ◆ Pneumatic brake plus mechanical friction damping brake.
- ◆ The imported electrical machine is adopted, and the electric perpendicular moving up and down.
- ◆ The gas pipeline, power supply and computer communication line are separately arranged without interference.
- ◆ The imported German standard gas terminal (over 20,000 of inserting and pulling out) is adopted.
- ◆ The high bearing capacity with suspension the anaesthesia machine system.
- ◆ The horizontal rotation function can accurately position without excursion.
- ◆ Basic configuration: one discharge device (German style) for compressed air,oxygen, suction gas, nitrous oxide and anesthetic gas respectively, four power outlets,one network outlets.(Optional gases)



# Monitor ECG



## SK-EM007 Monitor

- ◆ Unique outline design, skilful and portable.
- ◆ Clear and bright color LCD with real time display and large LED display values.
- ◆ Intelligent Measuring of NIBP/SpO<sub>2</sub>/PR/PLETH/TEMP.
- ◆ Storage/Review trend data up to 129 hours and 3688 groups.
- ◆ Audio and visual alarm.
- ◆ Built-in rechargeable Li-ion battery, up to 4-hour power supply.
- ◆ Automatic shutdown for power saving.
- ◆ Unique Tele-monitoring and Synchronization retransmit function.
- ◆ Utility PC software package for long time real time monitoring, web transferring, history data uploading/review/print/storage.

## SK-EM001 Monitor

- ◆ 12.1inch color TFT screen.
- ◆ Multi-channel display.
- ◆ Big font interface.
- ◆ ST and arrhythmia analysis.
- ◆ Drug dose calculation and titration table.
- ◆ OxyCGR dynamic view display.
- ◆ Respiration monitoring with apnea alarms.
- ◆ Alarm review, arrhythmia review.
- ◆ Patient info. input.
- ◆ Anti-defibrillation protection.
- ◆ NIBP pressure protection.
- ◆ Plug-in rechargeable battery, AC/DC available.
- ◆ Supporting wire or wireless network.



## SK-EM015 Monitor

- ◆ 12.1inch high brightness TFT color LCD display.
- ◆ Support the diagnosis, care, three kinds of monitoring operation mode.
- ◆ Support multiple lead 8 waveform with screen.
- ◆ Support the abnormal ECG waveform automatic analysis and ST segment analysis function.
- ◆ Oxygen saturation high detection sensitivity, fully support the weak pulse detection.
- ◆ Manual, automatic, fast, three types of blood pressure measurement.
- ◆ Have power data storage function.
- ◆ Recordable playback ECG waveform, blood pressure measurement data, trend chart, alarm events, etc.
- ◆ Built-in lithium battery, can direct external plug.
- ◆ Applicability is wide and is applicable to adults, children, newborns.
- ◆ Suitable for the operating room, ward and other environment.
- ◆ Support wired or wireless central monitoring system.



## SK-EM101 ECG

### Three Channel Interpretive Electrocardiograph

- ◆ Compact and lightweight design.
- ◆ 3.8 inch LCD screen.
- ◆ 12-lead simultaneous acquisition.
- ◆ Automatic measurement and interpretation.
- ◆ Digital isolation technology is adopted to minimizing time & temperature drift of components.
- ◆ Digital filtering, resisting baseline drift, AC and EMG interference.
- ◆ Automatic baseline adjustment.
- ◆ Optional rhythm lead printing.
- ◆ Auto/Manual work mode.
- ◆ Built-in high resolution thermal array printer.
- ◆ Built-in rechargeable battery, AC/DC power supply.

#### Technical Specifications

- ◆ Lead Standard: 12 leads
- ◆ Input circuit floating: Protection circuit against defibrillator effect.
- ◆ Input circuit current:  $\leq 50\text{ nA}$
- ◆ Patient current leakage:  $< 10\text{ }\mu\text{A}$
- ◆ Input impedance:  $\geq 500\text{ M}\Omega$
- ◆ Calibrating voltage:  $1\text{ mV} \pm 2\%$
- ◆ Skin voltage tolerance:  $\pm 500\text{ mV}$
- ◆ Sensitivity: 2.5, 5, 10, 20,  $10\text{ mm/mm}$
- ◆ Paper speed: 25, 50mm/s  $\pm 2\%$
- ◆ Time constant:  $> 3.2\text{ s}$
- ◆ Noise level:  $\leq 15\text{ }\mu\text{V/p}$
- ◆ Frequency response: 0.05Hz-150Hz(-3dB)
- ◆ CMRR  $> 80\text{ dB}$ ;  $> 100\text{ dB}$  (with AC filter).
- ◆ A/D converter 12bit.
- ◆ Recording paper roll paper: 63mm $\times$ 30m
- ◆ Operation mode AUTO/MAN.
- ◆ Printer thermal array printer.
- ◆ Anti baseline drift automatic.
- ◆ Rhythm lead II/III/V.
- ◆ Safety level: IEC60601-1 class IIa, type CF
- ◆ AC: 220V, 50Hz/110V, 60Hz
- ◆ Power requirements DC: built in rechargeable battery, supporting 50 exams after complete charging.

SK-EM103

SK-EM102

SK-EM101

# Syringe Pump

## SK-EM201 Syringe Pump

- 4.3inch Large LCD screen, with different colors show.
- With LCD backlight, can be used in various lighting conditions.
- Time display, convenience for show and time memory.
- Simultaneous display: Time, Battery, Injection state, Mode, Speed, Injection volume and time, Syringe size, Alarm sound, Block, Accuracy, Body weight, Drug, Dose and Liquid amount.
- Remote control function, can adjust speed, time, volume and drug amount directly, easier operation, save doctor and nurse's time.
- Advanced technology, mainly based on Linux system, more safe and steady. All technical are designed by ourselves, further update is available.
- Multi injection modes: V mode, T mode, and Body weight mode.
- Alarm: including all abnormal conditions alarm system, with visible, audible and details show on the screen.



## SK-EM204 Syringe Pump

- Our syringe pump could use all brands through calibration (default setting is Terumo), syringes including 10ml, 20ml, 30ml, 50ml.
- Auto-recognize the syringe size: 10ml, 20ml, 30ml, 50ml.
- Available for adjust alarm volume (3 levels), standby alarm delay time (1-9min), nearly finish alarm interval (0-3min).
- Power Switching Function: When AC power is disconnected, automatically switch into battery power supply and give indication.
- When the AC power is connected, automatically switch into AC power working.
- Repeat Alarm Function: If the alarm real reason is not resolved within 2 minutes after press "SILENCE" button, it will give alarm again to remind to resolve the problem.
- Battery Protection Alarm: For protect battery and safety infusion, the battery power will be displayed as different levels in sound and light from nearly finish to exhausted.
- Double Confirmation Function: When flow rate  $\geq 300$ ml/h, make safer and avoid misoperation.
- The data can be cleared, make safer.
- Lock the control panel during infusion, make safer.
- To avoid misoperation, press "POWER" for 3 seconds to close the pump.
- Able to set flow rate by single digit, tens digit and hundreds digit separately, not need to increase from single digit.
- KVO (Keep Vein Open) Function: After finish setting infusion amount, for prevent to form thrombus, keep to infusion at the lowest rate 0.1ml/h.
- Bolus (Quick Infusion) Function.
- Purge (Evacuate Bubble) Function.
- Press "ml", real-time display infused volume.
- The bright & large LED screen could be clear seen far from 10 meters.
- The battery can be used continuously for 5 hours after full charged.
- Equip pool with special adjustable-pitch fixed bracket. It could adjust the pump on 45° angle or other angle for easy watching.
- The chip in syringe pump is be processed by ourselves on SMT machine production line instead of by manual work, as weld every point by hand.
- CPU control, stable function, high reliability.
- Size: 320\*145\*120mm



## SK-EM202 Infusion Pump

- Pump Type: Drip type infusion pump
- Pumping Way: Peristaltic fingers
- Adjustable Drop Rate Range: 1-400 drops/min (step: 1 drop/min)
- Adjustable Volume Rate Range: 1-1200 ml/h (when 1-99.9 ml/h, step: 0.1 ml/h; greater than 99.9 ml/h, step: 1 ml/h)
- Flow Precision: Within  $\pm 3\%$  (using the IV set appointed by the manufacturer or calibrated high quality IV set); Mechanical precision: within  $\pm 2\%$ .
- Purge Rate: 800 ml/h
- KVO Rate: 1 ml/h (1-300 ml/h); 3 ml/h (greater than 300 ml/h)
- Infusion Volume Range: 1-9999.9 ml (step: 0.1ml)
- Maximum Accumulated Volume: 9999.9 ml (step: 0.1ml)
- Time Range: 1-9999 min (step: 1min)
- Occlusion Alarm Threshold: High: 800mmHg $\pm$ 200mmHg (106.7kPa $\pm$ 26.7kPa) Medium: 500mmHg $\pm$ 100mmHg (66.7kPa $\pm$ 13.3kPa) Low: 300mmHg $\pm$ 100mmHg (40.7kPa $\pm$ 13.3kPa)
- Alarm: Infusion complete, Empty, Faulty signal, Misoperation, Occlusion, Door open, Air Bubble, Low battery, Setting error, AC power off, Idle.
- Air Bubble Detector: Method: ultrasonic wave; Sensitivity:  $\geq 25\mu$ L
- Fuse: F1AL250V ("F" indicate fast, "L" indicate low breaking capacity), 2 pcs (installed inside pump).
- Power Supply: AC 85-265V, 50/60Hz;
- Internal Battery: 11.1V rechargeable Li-ion battery. Capacity:  $\geq 2000$ mAh; The pump can work more than 4 hours at the flow rate of 25 ml/h after charging for 8 hours (Medium rate specified by GB 9706.27-2005).
- Power:  $\leq 40$ VA
- Size: 188mm(L)\*198mm(W)\*228mm(H)
- N.W: 2.2KG
- Environment Requirements: Transport: Ambient Temperature: -30°C~+55°C Relative Humidity: 20%-95% (non-condensing) Atmosphere Pressure: 70kPa-106kPa Storage: Ambient Temperature: -30°C~+55°C Relative Humidity: 20%-95% Atmosphere Pressure: 70kPa-106kPa Operation: Ambient Temperature: +5~+40°C Relative Humidity: 20%-90% Atmosphere Pressure: 86kPa-106kPa



# Suction Apparatus Stomach Irrigator



## SK-EX101 Emergency Portable Suction Unit

- ◆ Negative pressure:  $\geq 0.09\text{MPa}$  (680mmHg)
- ◆ Air pumping efficiency:  $\geq 20\text{L/min}$
- ◆ Capacity of liquid vessel: 1000ml
- ◆ Range of negative pressure:  $0.013\text{MPa} - 0.09\text{MPa}$  (680mmHg)
- ◆ Power supply:  $\text{AC}220\text{V} \pm 10\%$  50Hz DC12V
- ◆ Input power: 150VA
- ◆ Pump structure: oil-free self-lubricated pump
- ◆ Noise:  $\leq 50\text{dB}$
- ◆ Work mode: intermittent loading, continuous operation

## SK-EX111 Electric Suction Device (Induced Abortion)

- ◆ Negative pressure:  $\geq 0.08\text{MPa}$  (600mmHg)
- ◆ Storage vessel: 1000ml
- ◆ Air pumping efficiency:  $\geq 10\text{L/min}$



## SK-EX102 Mobile Electric Suction Device

- ◆ Power voltage:  $\text{AC}220\text{V} \pm 10\%$  50Hz
- ◆ Negative pressure:  $\geq 0.09\text{MPa}$  (680mmHg)
- ◆ Suction rate:  $\geq 25\text{L/min}$  (35L pump suitable)
- ◆ Range of negative pressure:  $0.013\text{MPa} - 0.09\text{MPa}$  (680mmHg)
- ◆ Suction vessel:  $2500\text{ml}^2$
- ◆ Noise:  $\leq 55\text{dB}$
- ◆ Input power: 400VA
- ◆ Pump structure: diaphragm type
- ◆ Working type: intermittent loading, continuous operation



## SK-EX106 Electric Suction Device (Induced Abortion)

- ◆ Power voltage:  $\text{AC}220\text{V} \pm 10\%$  50Hz
- ◆ Negative pressure:  $\geq 0.09\text{MPa}$  (680mmHg)
- ◆ Range of negative pressure:  $0.013\text{MPa} - 0.09\text{MPa}$  (680mmHg)
- ◆ Pumping efficiency: stage  $1 \geq 35\text{L/min}$ ; stage  $2 \geq 15\text{L/min}$
- ◆ Liquid vessel:  $500\text{ml}^2$
- ◆ Gas vessel:  $2500\text{ml}^2$
- ◆ Noise:  $\leq 45\text{dB}$
- ◆ Input power: 400VA
- ◆ Pump structure: diaphragm type
- ◆ Working type: intermittent loading, continuous operation



## SK-EX103 Mobile Electric Suction Device

- ◆ Power voltage:  $\text{AC}220\text{V} \pm 10\%$  50Hz
- ◆ Negative pressure:  $\geq 0.09\text{MPa}$  (680mmHg)
- ◆ Suction rate:  $\geq 25\text{L/min}$
- ◆ Range of negative pressure:  $0.013\text{MPa} - 0.09\text{MPa}$  (680mmHg)
- ◆ Suction vessel:  $2500\text{ml}^2$
- ◆ Noise:  $\leq 55\text{dB}$
- ◆ Input power: 150VA
- ◆ Pump structure: diaphragm type
- ◆ Working type: intermittent loading, continuous operation



## SK-EX105 Mobile Electric Suction Device

- ◆ Power voltage:  $\text{AC}220\text{V} \pm 10\%$  50Hz
- ◆ Negative pressure:  $\geq 0.09\text{MPa}$  (680mmHg)
- ◆ Suction rate:  $\geq 25\text{L/min}$
- ◆ Range of negative pressure:  $0.013\text{MPa} - 0.09\text{MPa}$  (680mmHg)
- ◆ Suction vessel:  $2500\text{ml}^2$
- ◆ Noise:  $\leq 55\text{dB}$
- ◆ Input power: 400VA
- ◆ Pump structure: diaphragm type
- ◆ Working type: intermittent loading, continuous operation



# Suction Apparatus Stomach Irrigator

Model	SK-EX115	SK-EX002	SK-EX003	SK-EX004
Power voltage	AC220V±10% 50Hz±1%	AC220V±10% 50Hz	AC220V±10% 50Hz	AC220V±10% 50Hz
Suction rate	/	≥15L/min	≥15L/min	≥10L/min
Suction vessel	/	1000ml	1000ml	1000ml
Negative pressure	/	≥0.08MPa (600mmHg)	≥0.07MPa (600mmHg)	≥0.07MPa (600mmHg)
Negative pressure range	/	0.013-0.08MPa (600mmHg)	0.013-0.07MPa (600mmHg)	0.01-0.07MPa (600mmHg)
Pump structure	/	self-lubrication without oil	self-lubrication without oil	self-lubrication without oil
Input power	90VA	150VA	150VA	150VA
Noise	≤65dB	≤55dB	≤55dB	≤45dB
Working type	/	intermittent loading, continuous operation	intermittent loading, continuous operation	intermittent loading, continuous operation
Max. negative pressure value	≥0.08MPa	/	/	/
Pumping rate	≥17L/min	/	/	/
Reservoir volume	1000ml	/	/	/

SK-EX115



SK-EX002



SK-EX003



SK-EX004



SK-EX202

## Automatic Electric Stomach Washing

- ◆ Power voltage: AC220V±10% 50Hz
- ◆ Washing capacity: ≤500ml each time
- ◆ Suction capacity: ≤600ml each time
- ◆ Pressure of stomach washing: -0.05MPa~+0.05MPa
- ◆ Pump structure: oil-free diaphragm pump
- ◆ Frequency of cleaning: ≤20s
- ◆ Noise: ≤55dB
- ◆ Input power: 80VA±25%

SK-EX203

## Automatic Electric Stomach Washing

- ◆ Power voltage: AC220V±10% 50Hz
- ◆ Washing capacity: ≤500ml each time
- ◆ Suction capacity: ≤600ml each time
- ◆ Pressure of stomach washing: -0.05MPa~+0.05MPa
- ◆ Pump structure: oil-free diaphragm pump
- ◆ Frequency of cleaning: ≤20s
- ◆ Noise: ≤55dB
- ◆ Input power: 80VA±25%



SK-EX201

## Automatic Electric Stomach Washing

- ◆ Power voltage: AC220V±10% 50Hz
- ◆ Flow rate: washing ≥2000 ml/min  
sucking ≥2000 ml/min
- ◆ Pump structure: pulse pump
- ◆ Sputum vessel: 5000ml\*2
- ◆ Noise: ≤55dB
- ◆ Input power: 100VA±25%





# Ventilator Infant Incubator

## SK-EH201 Anaesthetic

- ◆ This is an economic type of Anesthesia Machine.
- ◆ The high-precision Vaporizer is designed with a stable concentration output, automatic compensation for pressure, temperature and flow rate. And it is available to choose one kind of gases from Halothane, Enflurane, Isoflurane, and Sevoflurane, ensuring a successful anesthesia operation.
- ◆ Reliable pneumatic transmission system.
- ◆ Economic and proper configuration of technologies, optional as required by the Customer.
- ◆ Modularized design and upgrading. Upgrading is available as required by the Customer.



## SK-EH301 Ventilator

- ◆ Ventilation mode: IPPV, SIPPV, SIMV, PEEP, SIGH, MAN
- ◆ Pressure-time waveform, flow rate-time waveform
- ◆ TV: 50-1500ml
- ◆ Rate: 2-99bpm
- ◆ I:E: 2:1-1:8
- ◆ 12 Parameters for ventilation monitoring
- ◆ 5 Security Alarm Systems
- ◆ Domestic 5.7inch LCD display

## SK-EH302 Ventilator

- ◆ Ventilation mode: IPPV, SIPPV, SIMV, PEEP, SIGH, MAN, PCV, VCV
- ◆ pressure-time waveform, flow rate-time waveform, flow-volume loop, pressure-volume loop
- ◆ TV: 20-1500ml
- ◆ Rate: 1-120bpm
- ◆ I:E: 4:1-1:8
- ◆ Monitoring of oxygen concentration: 21% ~ 100%
- ◆ 21 Parameters for ventilation monitoring
- ◆ 10 Security Alarm Systems
- ◆ Japan's sharp 10.4inch TFT color LCD screen display
- ◆ MAC solenoid valve (USA)
- ◆ Pressure sensor (USA)
- ◆ Electronic proportional valve (Germany)
- ◆ Simple respirator, humidifier, compressor



## SK-N002 Infant Incubator

- ◆ Power supply: AC220-230V/50Hz or AC110-120V/50-60Hz
- ◆ Max Power Output: 650VA
- ◆ Mode of control: Air mode control
- ◆ Air temperature control range: 25-37°C (override mode: 37-39°C)
- ◆ Temperature variability:  $\pm 0.5^\circ\text{C}$
- ◆ Temperature uniformity:  $\pm 0.8^\circ\text{C}$
- ◆ Inclination of the bassinet:  $\pm 12^\circ$
- ◆ Noise inside hood:  $\leq 55\text{dB}$  (Environment noise  $\leq 45\text{dB}$ )
- ◆ Failure alarm: over temperature alarm, deviation alarm, sensor failure alarm, fan motor alarm, power failure alarm, system alarm and so on
- ◆ Built-in timer range: 0-9999 hrs 59min
- ◆ Accuracy of weight display:  $\pm 1\%$  (equipped weighing system)



Double wall hood



With the side door



Electrical height adjustable (optional)



Tilt adjustable



Optional



Fluorescent lamp

SK-N201



Led lamp

SK-N202

# Infant Radiant Warmer Oxygen Concentrator



## SK-N101 Infant Radiant Warmer

- ◆ Pre-warm mode, manual mode and baby mode controlled by micro-computer
- ◆ Set temperature and baby temperature can be displayed separately
- ◆ Horizon angle of heater head and inclination of the bassinet can be adjusted
- ◆ The panels around bassinet can be disassembled
- ◆ APGAR timer
- ◆ Failure alarm indication
- ◆ RS232 connector

## SK-N102 Infant Radiant Warmer

- ◆ Pre-warm mode, manual mode and baby mode controlled by micro-computer
- ◆ Set temperature and baby temperature can be displayed separately
- ◆ Horizon angle of heater head and inclination of the bassinet can be adjusted
- ◆ The panels around bassinet can be turned outward
- ◆ X-ray cassette under the bassinet
- ◆ APGAR timer
- ◆ Failure alarm indication
- ◆ RS232 connector
- ◆ Vertical height adjustable stand and Baby scale is optional



## SK-N201 Infant Phototherapy Unit

- ◆ Mobile and fixed models, fixed model is specially mounted on our company's infant incubator
- ◆ Blue fluorescent lamp
- ◆ Timer to count phototherapy time
- ◆ Angle of lamp module can be adjusted (for mobile model)
- ◆ Height of lamp module can be adjusted (for mobile model)
- ◆ Wheels can be locked (for mobile model)



SK-N201

SK-N202

## SK-N202 Infant Phototherapy Unit

- ◆ Mobile and fixed models, fixed model is specially mounted on our company's infant incubator
- ◆ LED Bulb
- ◆ Timer to count phototherapy time
- ◆ Angle of lamp module can be adjusted (for mobile model)
- ◆ Height of lamp module can be adjusted (for mobile model)
- ◆ Wheels can be locked (for mobile model)



**Low Noise**

## SK-EH407 Oxygen Concentrator



Model	SK-EH407	Voltage	AC220±15V, 50±1Hz
Concentration Method	(PSA)	Noise	≤55dB
Input Way	against-the-ear, snorting type	Size	560*395*710mm
Input Power	320VA	Net Weight	26KG
Concentration	93%±3%	Pressure	20-50kPa
Output Oxygen	3L-90L/min	Display Control	LED
Accessories	Input tube, Suction tube, Water bottle, Oxygen uptake tube, atomization tubes, Ventilation sponge, Dust guard cover		

# Surgical Instrument



**SKN001**  
**Stainless Steel Tank**  
Size:  $\Phi 175\text{mm}$   $\Phi 200\text{mm}$   $\Phi 230\text{mm}$   
 $\Phi 260\text{mm}$   $\Phi 300\text{mm}$



**SKN002**  
**Stainless Steel Cream/Gauze Cans**  
Size:  $\Phi 80$   $90\text{mm}$   $\Phi 100$   $120\text{mm}$   
 $\Phi 120$   $120\text{mm}$   $\Phi 141$   $126\text{mm}$   $\Phi 160$   $154\text{mm}$



**SKN011**  
**Stainless Steel Sterilization Tray**  
With holes:  $150$   $120$   $45\text{mm}$   $200$   $110$   $45\text{mm}$   $150$   $100$   $45\text{mm}$   $200$   $110$   $45\text{mm}$   
Without holes:  $250$   $160$   $45\text{mm}$   $300$   $200$   $50\text{mm}$   $250$   $160$   $45\text{mm}$   $300$   $200$   $50\text{mm}$



**SKN012**  
**Stainless Steel Tray**  
Size:  $300$   $200$   $48\text{mm}$   $350$   $230$   $48\text{mm}$   $400$   $300$   $48\text{mm}$   
 $450$   $350$   $48\text{mm}$   $350$   $500$   $48\text{mm}$



**SKN021**  
**Stainless Steel Needle Sterilizer**  
Size: 77holes 100holes



**SKN022**  
**Stainless Steel Medicine-change Bowl**  
Size:  $\Phi 180\text{mm}$   $\Phi 200\text{mm}$   $\Phi 220\text{mm}$   
 $\Phi 240\text{mm}$   $\Phi 260\text{mm}$   $\Phi 280\text{mm}$



**SKN031**  
**Stainless Steel Kidney Dish**  
Shallow:  $120$   $130\text{mm}$   $1100$   $110\text{mm}$   $1178$   $104\text{mm}$   
Deep:  $124$   $125\text{mm}$   $1203$   $102\text{mm}$   $1165$   $102\text{mm}$



**SKN032**  
**Stainless Steel Sterilized Bottles/Medicine Cups**  
Sterilized bottles:  $\Phi 50$   $103\text{mm}$   $\Phi 50$   $133\text{mm}$   $\Phi 50$   $133\text{mm}$   $\Phi 50$   $133\text{mm}$   
Medicine cups:  $\Phi 14$   $43\text{mm}$   $\Phi 16$   $50\text{mm}$



**SKN042**  
**Stainless Steel Forceps Bucket**  
Inverted cone:  $\Phi 80$   $160\text{mm}$   $\Phi 64$   $150\text{mm}$   $\Phi 43$   $113\text{mm}$   
Straight:  $\Phi 80$   $200\text{mm}$   $\Phi 64$   $160\text{mm}$   $\Phi 43$   $113\text{mm}$



**SKN060**  
**Stainless Steel Clinic Pan**  
Size:  $400$   $300$   $33\text{mm}$   $310$   $240$   $31\text{mm}$   $300$   $198$   $50\text{mm}$   
 $290$   $190$   $30\text{mm}$   $228$   $148$   $50\text{mm}$



**SKN061**  
**Stainless Steel Bed Pan**  
Size:  $350$   $230$   $97\text{mm}$



**SKN062**  
**Stainless Steel Eye Washer**  
Size:  $148$   $100$   $97\text{mm}$



**SKN041**  
**Stainless Steel Soak Forceps Bucket/Measuring Cup/Enema Bucket**  
Measuring cup:  $1\text{L}$   $\Phi 100$   $150\text{mm}$   $2\text{L}$   $\Phi 130$   $190\text{mm}$   
Enema bucket:  $1\text{L}$   $\Phi 100$   $150\text{mm}$   $2\text{L}$   $\Phi 130$   $190\text{mm}$



**SKN063**  
**Stainless Steel Cuvette Stand**  
 $\Phi 18\text{mm}$   $\Phi 14\text{mm}$   
30holes 30holes  
40holes 40holes  
60holes 60holes



**SK-1101**  
**Disposable Circular Stapler**



**SK-1103**  
**Disposable Linear Cutter Stapler and Module**



**SK-1104**  
**Disposable Linear Stapler and Module**



**SK-1106**  
**Disposable Circular Stapler for Hemorrhoid**



**SK-1350**  
**Scalpel Handle**



**SK-1014**  
**Surgical Blade**



**SK-1304**  
**Perineum Scissor**



**SK-1201**  
**Ophthalmic Forceps**



**SK-1201-1**  
**Ophthalmic Forceps**



**SK-1202-2**  
**Tissue Holding Forceps**



**SK-1303**  
**Sponge Holding Forceps**



**SK-1325**  
**The Cutting Suture Scissors**